

KICK OFF TO SPRING BULL SALE



MARCH 2, 2022

SALE TIME - 2:00 PM

HARTNEY, MANITOBA

WELCOME FROM MAPLE LAKE STOCK FARMS...

W elcome to our 13th annual Kick off to Spring Bull sale.

This year`s offering has a variety of exclusive AI and walking sires that topped the past bull sales. We have returned to our self-managed sale, for the Commercial cattle men and women. We are primarily commercial producers, with the strong, reliable, consistent foundation genetics that keep our customers satisfied and coming back. We take great pride in our production, and stand behind our bulls and females. We are offering our own Maple Lake Insurance program. Talk to Gerry if interested.

Foundation females from LER 786T, Hi Voltage and Swagger, DLH Reno, IPU Roughrider, with a cross of our best Purebred Angus. These consistently are top producers. Tanner and Gracie have developed an impressive group of bulls, with full blood and red Simmental genetics.

The foundation genetics are proven year after year. We are optimistic the new sires will bring more performance and selection to our program. Our customers` satisfaction with quality replacement females, calving ease and high weaning steers keeps them coming back. The bulls are physically fit. They are fed for natural performance and longevity. We follow a complete herd health program with Virden Animal Health Clinic. The Return Yearling winter feeding program has been well received for 10 years.

We encourage you to come at your convenience to appraise our offering to make your selection. Talk to Gerry, he is happy to help you select the best genetics for your program.

After the sale you are welcome to enjoy some camaraderie, refreshments and **support the YCS Fundraiser Supper.**



KICK OFF TO SPRING
BULL SALE

Box 307, Hartney, MB R0M 0X0

Gerry & Linda • 204-858-2086

Gerry • 204-741-0340

glbertholet@hotmail.com

Tanner • 204-741-0653

www.MapleLakeStockFarms.com



Find us on Facebook!

Pictures & videos by:

Andrea Bertholet



MARCH 2, 2022 - SALE TIME 2:00 PM

At the Farm • Hartney, Manitoba



Quality runs deep in Maple Lake cow families. Above: ML 1761Y (786T) and two daughters, ML 4762E and ML 7761

SALE DAY INFORMATION

Auctioneer...

Ward Cutler 204-851-2614

Ringmen and Consultants...

Terry Fehr 204-362-7830

Sale Day Phones...

Gerry 204-741-0340

Linda 204-741-0338

Tanner 204-741-0653

Gracie 204-576-0163

Andrea 204-851-6087

Kayla 204-522-6639

Pictures & Videos...

Andrea Bertholet 204-851-6087
adbertholet@hotmail.com

Catalogue Creation...

Today's Publishing: 306-933-4200

Watch & Bid Online...

Internet Bidding Available

DLMS
www.dlms.ca

For more information call DLMS:
Mark Shologan 780.699.5082 or
DLMS Purebred Team 780.991.3025

View the catalogue & videos online at
www.BuyAgro.com

Testimonial



We purchased our first bull from Gerry & Linda over ten years ago and have returned every year since to continue to add their genetics to our herd.

One of the top things we look for in bull selection is calving ease & over the years we have had very little calving issues, nor vet bills. This is huge for us as we calve on grass and truly expect our cows to do their job, and

using Maple Lake bulls have enabled us to reach these expectations. Our calving starts by April 10 & the performance we get from the dams of the Maple Lake bloodlines is fantastic. Come November when we wean, our weaning weights have done nothing but increase each fall.. which always, as all ranchers, reflects positively on our bottom line.

The growth & chunkiness in all the calves in the fall, and the fantastic udders, mothering & quiet temperament of our Maple Lake replacements back into our herd are exactly reasons why we love working with Gerry & Linda to continue to grow & improve our herd.

The whole Maple Lake crew is always like coming home to family every sale day, and the service we receive from them year-round is second to none, another huge appreciation for us.

-Bar Z Ranch
Jason & Theresa Zuk & family
Arborg, Mb

Guarantee:

Each animal becomes the purchaser's risk immediately after the animal is sold. All animals in this sale will be sold under the terms and guarantees set forth by the Canadian Simmental Association and Canadian Angus Association with regard to health, freedom from defects and from both reproductive and specific genetic unsoundness.

Delivery:

Assistance will be given in getting your purchases home. Each animal becomes the risk of the purchaser as soon as sold.

Phone, Mail, Wire Bids:

Bidders unable to attend the sale may phone, wire or mail their bids and instructions to the sale manager, auctioneer or special representatives. Bids must be received in sufficient time prior to the sale.

Insurance:

We strongly recommend that insurance is purchased for full value.

Errors:

All announcements at sale time, written or oral, supercede any written material in the catalogue.

TERMS AND CONDITIONS

Terms:

The terms of the sale are cash or cheque, payable at the sale location. The right of property shall not pass until after settlement has been made. Every animal sells to the highest bidder and in cases of disputes, the auctioneer's decision will be final. Announcements from the auction block will take precedence over the printed matter in the catalogue. Current exchange rates will be announced sale day. All monies are in Canadian funds.

Certificate of Registration:

Each animal will carry papers issued by the Canadian Simmental Association and Canadian Angus Association unless otherwise specified. A certificate of registry duly transferred will be furnished to the buyer for each animal after payment has been made.

Pedigree Estimates

Pedigree Estimates (PE) are created on the projected mating of the animal's sire and dam based on averages of the two, creating estimated values that do not hold the same accuracy of actual EPDs issued from the association and should be used as such.

Health:

All animals in the sale have met all necessary health requirements.



SIMMENTAL - IPU BENTLEY 81F SONS



1

MAPLE LAKE BENTLEY 0014H

December 26, 2020 • ML 0014H • Polled • Unregistered • 3/4

WHEATLAND BENTLEY 630D
→ **IPU BENTLEY 81F**
CLAYHILL FANCY LUCA 39A

MAPLE LAKE PLATINUM 6037
→ **ML 9014G**
SIMM/ANGUS

WHEATLAND FINAL AFFAIR
WHEATLAND LADY 72X
KN MR NLC UPGRADE U8676
CLAYHILL FANCY PANTS 32S
REMINGTON LOCK N LOAD 54L
MAPLE LAKE HOTTIE 1907

Dam WT: 1360 lbs.
BW: 79 lbs.
May WT: 513 lbs.
Oct. WW: 990 lbs.
% Weaned: 73%
Pasture WDA: 3.7 lbs.

CE	BW	WW	YW	MILK	MCE	MWWT
----	----	----	----	------	-----	------

2

MAPLE LAKE BENTLEY 1021

January 5, 2021 • ML 1021J • Polled • BPTRS1366885 • 3/4

WHEATLAND BENTLEY 630D
→ **IPU BENTLEY 81F**
CLAYHILL FANCY LUCA 39A

WHEATLAND BULL 786T
→ **MAPLE LAKE MS BOMBER 1108**
HDM 5099

WHEATLAND FINAL AFFAIR
WHEATLAND LADY 72X
KN MR NLC UPGRADE U8676
CLAYHILL FANCY PANTS 32S
WHEATLAND BULL 131L
WHEATLAND LADY 351N

Dam WT: 1460 lbs.
BW: 103 lbs.
May WT: 506 lbs.
WW: 855 lbs.
% Weaned: 59%
Pasture WDA: 3.3 lbs.

CE	BW	WW	YW	MILK	MCE	MWWT
----	----	----	----	------	-----	------

10.3	2.2	89.1	130.3	24.2	5.4	68.8
------	-----	------	-------	------	-----	------

IPU Bentley sons are all eye catching performance bulls. The dams ML 1108Y and MLSF 0894X are proven donor dams and corner stones of our program. These Bentley boys are going to be popular.



IPU BENTLEY 81F SONS



3

MAPLE LAKE BENTLEY 1022

January 6, 2021 • ML 1022J • Polled • BPTRS1366886 • 3/4

WHEATLAND BENTLEY 630D
 → IPU BENTLEY 81F
 CLAYHILL FANCY LUCA 39A

WHEATLAND BULL 786T
 → MAPLE LAKE MS BOMBER 1108
 MLSF 5099R

WHEATLAND FINAL AFFAIR
 WHEATLAND LADY 72X
 KN MR NLC UPGRADE U8676
 CLAYHILL FANCY PANTS 32S
 WHEATLAND BULL 131L
 WHEATLAND LADY 351N

Dam WT: 1460 lbs.
 BW: 94 lbs.
 May WT: 365 lbs.
 WW: 855 lbs.
 % Weaned: 59%
 Pasture WDA: 3.3 lbs.

CE	BW	WW	YW	MILK	MCE	MWWT
10.3	2.2	89.1	130.3	24.2	5.4	68.8

4

MAPLE LAKE BENTLEY 1325

January 4, 2021 • ML 1325J • Polled • BPTRS1366875 • 3/4

WHEATLAND BENTLEY 630D
 → IPU BENTLEY 81F
 CLAYHILL FANCY LUCA 39A

WHEATLAND BULL 786T
 → MAPLE LAKE MS BOMBER 1108
 MLSF 5099R

WHEATLAND FINAL AFFAIR
 WHEATLAND LADY 72X
 KN MR NLC UPGRADE U8676
 CLAYHILL FANCY PANTS 32S
 WHEATLAND BULL 131L
 WHEATLAND LADY 351N

Dam WT: 1460 lbs.
 BW: 91 lbs.
 May WT: 455 lbs.
 WW: 1035 lbs.
 % Weaned: 71%
 Pasture WDA: 4 lbs.

CE	BW	WW	YW	MILK	MCE	MWWT
10.3	2.2	89.1	130.3	24.2	5.4	68.8



Maple Lake 1108Y - Daughter MLSF 5099

IPU BENTLEY 81F SONS



ML 0392H - Maternal Brother
Sold to Bob McLeod



MLSF 0894X - Dam

5

MAPLE LAKE BENTLEY 1568

January 1, 2021 • ML 1568J • Polled • BPTRS1366940 • 1/2

WHEATLAND BENTLEY 630D
→ IPU BENTLEY 81F
CLAYHILL FANCY LUCA 39A

S A V HERITAGE 6295
→ MAPLE LAKE 0894X
PRAIRIELANE 8116 ROSEBUD 1098

WHEATLAND FINAL AFFAIR
WHEATLAND LADY 72X
KN MR NLC UPGRADE U8676
CLAYHILL FANCY PANTS 32S
CAR DUKE 104
S A V BLACKCAP MAY 4136
PRAIRIELANE IDEAL 1418-8116
PRAIRIELANE 2054 ROSEBUD 7013

Dam WT: 1700 lbs.
BW: 103 lbs.
May WT: 650 lbs.
WW: 1235 lbs.
% Weaned: 76%
Pasture WDA: 4.7lbs.

CE	BW	WW	YW	MILK	MCE	MWWT
7.1	3.6	87.2	131.7	21.3	3.9	64.9

ML 1568J's maternal brother is Lot 70 MLSF 1517J he is the heaviest Purebred Angus bull. Performance from the dam side is strong and powerful. Two maternal brothers were high sellers last year and are working in Bob McLeod's program.

6

MAPLE LAKE BENTLEY 1247

December 26, 2020 • ML 1247H • Polled • BPRS1346729 • 7/8

WHEATLAND BENTLEY 630D
→ IPU BENTLEY 81F
CLAYHILL FANCY LUCA 39A

WHEATLAND BULL 786T
→ MAPLE LAKE BLK RENO 2247
MAPLE LAKE MS RENO 0247X

WHEATLAND FINAL AFFAIR
WHEATLAND LADY 72X
KN MR NLC UPGRADE U8676
CLAYHILL FANCY PANTS 32S
WHEATLAND BULL 131L
WHEATLAND LADY 351N
DLH RENO 8R
SIMMENTAL/ANGUS

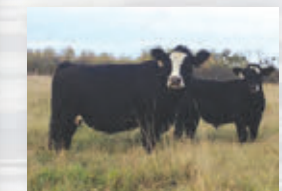
Dam WT: 1670 lbs.
BW: 93 lbs.
May WT: 610 lbs.
WW: 1160 lbs.
% Weaned: 69%
Pasture WDA: 4.3 lbs.

CE	BW	WW	YW	MILK	MCE	MWWT
8.9	3.2	88.7	126.9	28.7	3.8	73.1

This bull's dam ML 2247Z is a LER 786T daughter out of Reno dam. A maternal sister ML 4248B is working well in Wes Mack's program. He will be hetro black and Homo polled. He has a very impressive weaning weight, and herd sire presence. Maple Lake wants to retain interest in this bull.



ML 9247 - Full Sister
Sold to Rendezvous Farms



Maple Lake 2247Z - Dam



Maple Lake Bentley 1247H

SPRINGCREEK BLUE CHIP 9D & SUNNY VALLEY CANNON 86E SONS



7

MAPLE LAKE BLUECHIP 0646

December 20, 2020 • ML 0646H • Polled • PG1352073 • Purebred

SPRINGCREEK LINER 56U
 → SPRINGCREEK BLUE CHIP 9D
 SPRINGCREEK TARA 111R

WHEATLAND HEADLINE 872U
 → ML 6646D
 MAPLE LAKE 3346

RCC/TCF LINE DRIVE M181
 NEVAS L93
 MSR KANSAS TANK 235M
 SPRINGCREEK BROOKE 38L
 WHEATLAND BULL 680S
 WHEATLAND LADY 609 S
 IPU ROUGHRIDER 2T
 BLCC MISS RED 345T

Dam WT: 1710 lbs.
 BW: 94 lbs.
 May WT: 663 lbs.
 WW: 1150 lbs.
 % Weaned: 67%
 Pasture WDA: 4.2 lbs.

CE	BW	WW	YW	MILK	MCE	MWWT
4.9	4.8	92.3	137.6	26.3	3.5	72.5

This Blue Chip bull does make performance calves. The dam side is from another of our foundation Wheatland sires Headline LER 872U. He has depth and performance and a great hair coat. He is a Wheatland 680S son. Wheatland 680S is a full brother to our exclusive Wheatland 786T bull. The great grand dam is the long standing, consistent BCC 345T. Lots of validated genetics here.

8

MAPLE LAKE CANON 20

January 20, 2021 • ML 20J • Polled • Pending • Purebred

STARWEST POL BLUEPRINT
 → SUNNY VALLEY CANON 86E
 SUNNY VALLEY TRINITY 53Z

DLH RENO 8R
 → MAPLE LAKE 5137
 BLCC MISS AUTOBAHN 137Z

ANCHOR "T" RUSTY 59G
 PHS HOMOZYGOUS XCEPTIONAL
 ANCHOR D VIPER 103W
 SUNNY VALLEY TRINITY 70T
 ANCHOR "T" METRO 4E
 BLCC MISS KRYSTAL 23K
 DOUBLE BAR D AUTOBAHN
 BLCC MISS ROSS 90U

Dam WT: 1570 lbs.
 BW: 110 lbs.
 May WT: 610 lbs.
 WW: 1131 lbs.
 % Weaned: recp
 Pasture WDA: 4.6 lbs.

CE	BW	WW	YW	MILK	MCE	MWWT
7	4.5	77.1	112.8	39.8	5.5	78.4

These three full brothers have very strong genetics on the dam side. MI 5137C has earned the right to be a new donor dam. Her depth, maternal strength and performance is proven to be ideal. Sunny Valley Canon is an elite full blood sire we were pleased to add to our game plan. Purebred registration, homo polled and non-dilutor is pending on these embryo calves.



Sunny Valley Canon 86E - Sire



Maple Lake Reno 5137 - Dam



SUNNY VALLEY CANON 86E SONS



Sunny Valley Canon 86E - Sire

9

MAPLE LAKE CANON 33

January 17, 2021 • ML 33J • Polled • Pending • Purebred

STARWEST POL BLUEPRINT
→ SUNNY VALLEY CANON 86E
SUNNY VALLEY TRINITY 53Z

DLH RENO 8R
→ MAPLE LAKE 5137
BLCC MISS AUTOBAHN 137Z

ANCHOR "T" RUSTY 59G
PHS HOMOZYGOUS XCEPTIONAL
ANCHOR D VIPER 103W
SUNNY VALLEY TRINITY 70T
ANCHOR "T" METRO 4E
BLCC MISS KRYSTAL 23K
DOUBLE BAR D AUTOBAHN
BLCC MISS ROSS 90U

Dam WT: 1570 lbs.
BW: 99 lbs.
May WT: 540 lbs.
WW: 960 lbs.
% Weaned: recip
Pasture WDA: 4 lbs.

CE	BW	WW	YW	MILK	MCE	MWWT
7	4.5	77.1	112.8	39.8	5.5	78.4

Purebred registration, homo polled and non-dilutor is pending.

10

MAPLE LAKE CANON 607

January 20, 2021 • ML 607J • Polled • Pending • Purebred

STARWEST POL BLUEPRINT
→ SUNNY VALLEY CANON 86E
SUNNY VALLEY TRINITY 53Z

DLH RENO 8R
→ MAPLE LAKE 5137
BLCC MISS AUTOBAHN 137Z

ANCHOR "T" RUSTY 59G
PHS HOMOZYGOUS XCEPTIONAL
ANCHOR D VIPER 103W
SUNNY VALLEY TRINITY 70T
ANCHOR "T" METRO 4E
BLCC MISS KRYSTAL 23K
DOUBLE BAR D AUTOBAHN
BLCC MISS ROSS 90U

Dam WT: 1570 lbs.
BW: 94 lbs.
May WT: 565 lbs.
WW: 955 lbs.
% Weaned: recip
Pasture WDA: 4 lbs.

CE	BW	WW	YW	MILK	MCE	MWWT
7	4.5	77.1	112.8	39.8	5.5	78.4

Purebred registration, homo polled and non-dilutor is pending.



RENDEZVOUS 591G SONS



Maple Lake Swagger 6666D
Maternal Brother



11

11

MAPLE LAKE CHARLES 1366

January 12, 2021 • ML 1366J • Polled • Pending • Purebred

LHVS CHARLES 29C
→ **RENDEZVOUS 591G**
RENDEZVOUS MS PARA 591Y

WHEATLAND BULL 786T
→ **MAPLE LAKE 3266**
ACS MS WILMA 265W

SOUTHSEVEN MR ADONIS 96Z
LHVS MS LOCKHART 91X
SU PARAMOUNT 55P
RENDEZVOUS 528P
WHEATLAND BULL 131L
WHEATLAND LADY 351N
TNT TOP GUN R244
HAAS RANCH G217

Dam WT: 1620 lbs.
BW: 91 lbs.
May WT: 500 lbs.
WW: 1025 lbs.
% Weaned: 63%
Pasture WDA: 4 lbs.

CE	BW	WW	YW	MILK	MCE	MWWT
8	5	87.3	131.3	34.5	4.9	78.2

This bulls dam is one of the top females at Maple Lake. She is a 786T daughter who has a line up of great progeny. A Maternal brother Maple Lake Swagger 6666 owned by Bonchuck Farms. This new Mating to the impressive Charles Full blood son will add even more power. He carries an great coat of hair. Purebred registration is pending.

12

MAPLE LAKE CHARLES 1779

January 1, 2021 • ML 1799J • Horned • Pending • Purebred

LHVS CHARLES 29C
→ **RENDEZVOUS 591G**
RENDEZVOUS MS PARA 591Y

PHS YUKON
→ **CAR-LAUR LADY DEE 779D**
CAR-LAURLADYANTEBELUM683A

SOUTHSEVEN MR ADONIS 96Z
LHVS MS LOCKHART 91X
SU PARAMOUNT 55P
RENDEZVOUS 528P
CHAMPS BRAVO
BAR 5 SA MININNA 457P
WLSF KALDORIK
CAR-LAUR UNIVERSE 458U

Dam WT: 1410 lbs.
BW: 94 lbs.
May WT: 460 lbs.
WW: 985 lbs.
% Weaned: 70%
Pasture WDA: 4 lbs.

CE	BW	WW	YW	MILK	MCE	MWWT
4.3	6.2	75.5	106.7	38.5	2.1	76.3

Rendezvous AIA 591G is a LHVS Charles son we paid top dollar for at Rendezvous Sale. The powerful build is sure to bring more weaning performance. Purebred registration is pending.



12

RENDEZVOUS 591G SONS

These three Rendezvous Charles sons all have black sim /angus dams. That hybrid vigor has proven worthy to many of our customers. The full blood genetics will jack up the performance with some chrome.



13

MAPLE LAKE CHARLES 1433

January 24, 2021 • ML 1433J • Polled • Pending • 3/4

LHVS CHARLES 29C
→ **RENDEZVOUS 591G**
RENDEZVOUS MS PARA 591Y

WHEATLAND BULL 786T
→ **MAPLE LAKE MS BOMBER 4733**
ANGUS/ANGUS

SOUTHSEVEN MR ADONIS 96Z
LHVS MS LOCKHART 91X
SU PARAMOUNT 55P
RENDEZVOUS 528P
WHEATLAND BULL 131L
WHEATLAND LADY 351N

Dam WT: 1875 lbs.
BW: 91 lbs.
May WT: 475 lbs.
WW: 885 lbs.
% Weaned: 47%
Pasture WDA: 3.5 lbs.

CE	BW	WW	YW	MILK	MCE	MWWT
8.2	3.8	77.9	116.7	34.3	5.4	73.3



14

MAPLE LAKE CHARLES 1057

January 13, 2021 • ML 1057J • Polled • Pending • 3/4

LHVS CHARLES 29C
→ **RENDEZVOUS 591G**
RENDEZVOUS MS PARA 591Y

HOOKS SHEAR FORCE 38K
→ **MAPLE LAKE SHEAR FORCE 57**
SIMMENTAL/SIMMENTAL

SOUTHSEVEN MR ADONIS 96Z
LHVS MS LOCKHART 91X
SU PARAMOUNT 55P
RENDEZVOUS 528P
NICHOLS LEGACY G151
C&D TRACY

Dam WT: 1620 lbs.
BW: 91 lbs.
May WT: 520 lbs.
WW: 990 lbs.
% Weaned: 61%
Pasture WDA: 4 lbs.

CE	BW	WW	YW	MILK	MCE	MWWT
7.9	4.3	81	113.7	38.1	5	78.6



Maple Lake 0057H - Maternal Brother
Sold to Shorey Farms



15

MAPLE LAKE CHARLES 1450

January 17, 2021 • ML 1450J • Polled • Unregistered • 1/2

LHVS CHARLES 29C
→ **RENDEZVOUS 591G**
RENDEZVOUS MS PARA 591Y

SOO LINE MOTIVE 9016
→ **MLSF 6450D**
PRAIRIELANE 8116 ROSEBUD 1098

SOUTHSEVEN MR ADONIS 96Z
LHVS MS LOCKHART 91X
SU PARAMOUNT 55P
RENDEZVOUS 528P
HF KODIAK 5R
WILBAR RUBY 955N
PRAIRIELANE IDEAL 1418-8116
PRAIRIELANE 2054 ROSEBUD 7013

Dam WT: 1405 lbs.
BW: 98 lbs.
May WT: 450 lbs.
WW: 945 lbs.
% Weaned: 67%
Pasture WDA: 4 lbs.

CE	BW	WW	YW	MILK	MCE	MWWT
5.6	5.9	80.8	116.2	34.1	3.3	74.5

CROSSROAD CONNECTED 12G SONS

Crossroads Connected sire was one of the leading sires, that we added to our team last breeding season. His calves hit the ground with impressive thickness.

16

MAPLE LAKE CONNECTED 1805

January 16, 2021 • ML 1805J • Polled • BPRS1352090 • 3/4

SIBELLE SPARTACUS 8A
 CROSSROAD RED STETSON 9E \ HP-HEP IPU MS. CODE RED 249A
 → CROSSROAD CONNECTED 12G \ HP-HOP CC-RC KOP CROSBY 137W
 PERKS BLACK DOLL 1121Y \ HP-HOP CC-RC WFL MISS 21F DOLL 20P
 WHEATLAND PREDATOR 922W
 WHEATLAND SWAGGER 343A \ HP-HOP CC-HOB WHEATLAND LADY 721 T
 → MAPLE LAKE SWAGGER 8805
 PUREBRED ANGUS

Dam WT: 1400 lbs.
 BW: 93 lbs.
 May WT: 445 lbs.
 WW: 885 lbs.
 % Weaned: 63 %
 Pasture WDA: 3.5 lbs.

CE	BW	WW	YW	MILK	MCE	MWWT
9.0	3.2	79.8	116.1	30.9	4.4	70.8



16

17

MAPLE LAKE CONNECTED 1499

January 19, 2021 • ML 1499J • Polled • BPRS1346753 • 7/8

SIBELLE SPARTACUS 8A
 CROSSROAD RED STETSON 9E \ HP-HEP IPU MS. CODE RED 249A
 → CROSSROAD CONNECTED 12G \ HP-HOP CC-RC KOP CROSBY 137W
 PERKS BLACK DOLL 1121Y \ HP-HOP CC-RC WFL MISS 21F DOLL 20P
 MR ABONDANCE
 3C PASQUE 8773
 → MAPLE LAKE 4299
 MAPLE LAKE 2099
 3C CROCUS 5309 SP
 WHEATLAND BULL 786T
 HDM 5099R

Dam WT: 1545 lbs.
 BW: 99 lbs.
 May WT: 460 lbs.
 WW: 1015 lbs.
 % Weaned: 66%
 Pasture WDA: 4 lbs.

CE	BW	WW	YW	MILK	MCE	MWWT
9.0	3.2	79.8	116.1	30.9	4.4	70.8



17

18

MAPLE LAKE CONNECTED 1850

January 11, 2021 • ML 1850J • Polled • BPG1352064 • Purebred

SIBELLE SPARTACUS 8A
 CROSSROAD RED STETSON 9E \ HP-HEP IPU MS. CODE RED 249A
 → CROSSROAD CONNECTED 12G \ HP-HOP CC-RC KOP CROSBY 137W
 PERKS BLACK DOLL 1121Y \ HP-HOP CC-RC WFL MISS 21F DOLL 20P
 ANCHOR "T" RUSTY 59G
 STARWEST POL BLUEPRINT
 → MAPLE LAKE BLUEPRINT 8150
 MAPLE LAKE HOTTIE 1907
 PHS HOMOZYGOUS XCEPTIONAL
 LFE HOT TOPIC 312W
 MAPLE LAKE MS BOMBER 9907

Dam WT: 1370 lbs.
 BW: 75 lbs.
 May WT: 410 lbs.
 WW: 895 lbs.
 % Weaned: 65%
 Pasture WDA: 3.5 lbs.

CE	BW	WW	YW	MILK	MCE	MWWT
9.8	1.7	79.2	117.1	33.4	7.0	73.0

This herd prospect's grand dam - Maple Lake Hottie1907Y is a strong and solid donor dam. Maple Lake Blue Print 8050F is a full sister to this bulls dam. She was a high seller to Quinn Wilson. Maple Lake will retain an interest in the sire to breed a pen of bred heifers.



Maple Lake Hottie 1907Y - Grand Dam



Maple Lake Blue Print 8050F - Dam's Full Sister



18

CROSSROAD CONNECTED 12G SONS



Crossroad Connected 12G - Sire

19

MAPLE LAKE CONNECTED 1566

January 16, 2021 • ML 1566J • Polled • BPG1352087 • Purebred

SIBELLE SPARTACUS 8A
 CROSSROAD RED STETSON 9E \ HP-HEP IPU MS. CODE RED 249A
 → CROSSROAD CONNECTED 12G \ HP-HOP CC-RC KOP CROSBY 137W
 PERKS BLACK DOLL 1121Y \ HP-HOP CC-RC WFL MISS 21F DOLL 20P
 WHEATLAND BULL 131L
 WHEATLAND LADY 351N
 → MAPLE LAKE 786 8566
 WHEATLAND SWAGGER 343A
 MAPLE LAKE 5522
 ACS MS WILMA 265W

Dam WT: 1205 lbs.
 BW: 79 lbs.
 May WT: 400 lbs.
 WW: 866 lbs.
 % Weaned: 72%
 Pasture WDA: 3.5 lbs.

CE	BW	WW	YW	MILK	MCE	MWWT
10.1	1.1	77.5	114.3	26.1	6.3	64.9

20

MAPLE LAKE CONNECTED 1761

February 1, 2021 • ML 1761J • Polled • BPG1352080 • Purebred

SIBELLE SPARTACUS 8A
 CROSSROAD RED STETSON 9E \ HP-HEP IPU MS. CODE RED 249A
 → CROSSROAD CONNECTED 12G \ HP-HOP CC-RC KOP CROSBY 137W
 PERKS BLACK DOLL 1121Y \ HP-HOP CC-RC WFL MISS 21F DOLL 20P
 WHEATLAND PREDATOR 922W
 WHEATLAND LADY 721 T
 → MAPLE LAKE 7761
 WHEATLAND BULL 786T
 MAPLE LAKE YURI 1761
 ACS MS WILLAMENA 9761W

Dam WT: 1465 lbs.
 BW: 99 lbs.
 May WT: 355 lbs.
 WW: 835 lbs.
 % Weaned: 59%
 Pasture WDA: 3.5 lbs.

CE	BW	WW	YW	MILK	MCE	MWWT
5.5	5.0	84.4	125.5	26.4	1.7	68.6

There is consistency here. Both these boys are from our 2 foundation donor dams 265W & 9761W, these dams are maternal sisters.



Wheatland Swagger 343A- Grand Sire



Maple Lake 7761E - Dam



Maple Lake Yuri 1761 - Grand Dam

SILVER LAKE EMPIRE 8E SONS



21

MAPLE LAKE EMPIRE 0480

April 20, 2020 • ML 0480H • Polled • 1/2

ANCHOR D IMAX 250Y
→ **SILVER LAKE EMPIRE 8E**
ANCHOR D ADLEY 175C

BROOKING BANK NOTE 4040
→ **MLSF 8480F**
MAPLE LAKE 2041Z

HEMR SAMURAI 7S
DORA LEE ELEXIS
DOUBLE BAR D INTUITION
HEMR SONYA 25S
CONNEALY EARNAN 076E
E A ROSE 918
S A V PIONEER 7301
MAPLE LAKE RICHELLE 5099R

Dam WT: 1320 lbs.
BW: 86 lbs.
WW: 850 lbs.
YW WT: 1085 lbs.
% Weaned: 82%
Pasture WDA:

CE BW WW YW MILK MCE MWWT

22

MAPLE LAKE EMPIRE 0004

April 27, 2020 • ML 0004H • Polled • 1/2

ANCHOR D IMAX 250Y
→ **SILVER LAKE EMPIRE 8E**
ANCHOR D ADLEY 175C

BROOKING BANK NOTE 4040
→ **MAPLE LAKE BANKNOTE 8004**
YOUNG DALE BLACKBIRD 4C

HEMR SAMURAI 7S
DORA LEE ELEXIS
DOUBLE BAR D INTUITION
HEMR SONYA 25S
CONNEALY EARNAN 076E
E A ROSE 918
YOUNG DALE YOHAN 133A
YOUNG DALE BLACKBIRD 101U

Dam WT: 1300 lbs.
BW: 91 lbs.
WW: 946 lbs.
YW WT: 1058 lbs.
% Weaned: 83%
Pasture WDA:

CE BW WW YW MILK MCE MWWT

These two half bloods are 3/4 brothers. Half Fleck and Black Angus stylish herd prospects. Both Dams are Brooking BankNote first calf heifers, with beautiful udders.



THSF FREEDOM 300N & SILVER LAKE FREIGHTLINER SONS



23

MAPLE LAKE FREEDOM 1194

January 29, 2021 • ML 1194J • Polled • PG1352085 • Purebred

BH TRACKER 998J
 → THSF FREEDOM 300N
 SAFN MISS ZING 02H

STARWEST TOTAL VALUE
 → LRX MS RED 194E
 LRX MS RED 150Z

LRS PREFERRED STOCK 370C
 699F
 SAC JET TOP 2D
 SAC MISS ZING 88E
 DOUBLE BAR D SPITFIRE 20X
 PHS POLLED WINFALL 27W
 SLF RED HUMMER 81U
 LRX 58S

Dam WT: 1545 lbs.
 BW: 91 lbs.
 May WT: 446 lbs.
 WW: 920 lbs.
 % Weaned: 60%
 Pasture WDA: 4 lbs.

CE	BW	WW	YW	MILK	MCE	MWWT
4.4	3.6	83.4	130.1	28.4	3.1	70.1

ML 0568H genetics go back to one of our old donor dams 9764W. A deep and powerful dam, with many impressive progeny. The Silver Lake Freightliner was a thick and soggy yearling. Lots of performance here.



24

MAPLE LAKE FREIGHTLINER 0568

December 25, 2021 • ML 0568H • Polled • PTG1366878 • ET Purebred

SPRINGCREEK LINER 56U
 → SILVER LAKE FREIGHTLINER 13F
 SPRINGCREEK JOY 163Y

REMINGTON ON TARGET 2S
 → ACS MS WYONA 9764W
 HAAS RANCH G217

RCC/TCF LINE DRIVE M181
 NEVAS L93
 HART ALL IN W382
 SPRINGCREEK LINNE 29R
 REMINGTON RED LABEL HR
 DRAKE SOFT TOUCH 15M
 NLC 64Y TOMCAT
 HAAS RANCH D89

Dam WT: 1520 lbs.
 BW: 82 lbs.
 May WT: 580 lbs.
 WW: 910 lbs.
 % Weaned: 60%
 Pasture WDA: 3.4 lbs.

CE	BW	WW	YW	MILK	MCE	MWWT
8.0	2.8	83.8	129.6	22.7	5.7	64.6



25

MAPLE LAKE FREIGHTLINER 1209

January 5, 2021 • ML 1209J • Polled • PG1346737 • Purebred

SPRINGCREEK LINER 56U
 → SILVER LAKE FREIGHTLINER 13F
 SPRINGCREEK JOY 163Y

LCHMN BODYBUILDER 7303F
 → MAPLE LAKE 3209
 MAPLE LAKE QUORUM 0209

RCC/TCF LINE DRIVE M181
 NEVAS L93
 HART ALL IN W382
 SPRINGCREEK LINNE 29R
 3C WALLY C240 BLK
 LSF MOMENTO D8
 IPU ROUGHRIDER 2T
 MAPLE LAKE MS QUORUM 5209

Dam WT: 1700 lbs.
 BW: 71 lbs.
 May WT: 465 lbs.
 WW: 930 lbs.
 % Weaned: 56%
 Pasture WDA: 3.6 lbs.

CE	BW	WW	YW	MILK	MCE	MWWT
8.8	1.2	76.3	116.4	28.9	6.2	67.1

WHEATLAND BULL 786T SON



26

MAPLE LAKE 786T 1350

January 1, 2021 • ML 1350J • Polled • PTG1366882 • ET Purebred

WHEATLAND BULL 131L
 → WHEATLAND BULL 786T
 WHEATLAND LADY 351N

TNT TOP GUN R244
 → ACS MS WILMA 265W
 HAAS RANCH G217

NICHOLS BLK DESTINY D12
 WHEATLAND LADY 908J
 HART JACKPOT J310
 WHEATLAND MISS 917J
 TNT GUNNER N208
 TNT MISS SADIE M68
 NLC 64Y TOMCAT
 HAAS RANCH D89

Dam WT: 1610 lbs.
 BW: 83 lbs.
 May WT: 525 lbs.
 WW: 1040 lbs.
 % Weaned: 65%
 Pasture WDA: 4 lbs.

CE	BW	WW	YW	MILK	MCE	MWWT
12.9	1.3	78.4	121.4	20.9	7.2	60.1

This young sire's donor dam has been very valuable in our program. There are many females and herd sires from this very same mating. This bulls 10 yr old full sister ML 2266Z has been added to our donor program. Another Full sister ML 3266A is the dam of the Maple Lake Swagger 6666 bull. A maternal Killswitvch daughter was a high selling open heifer, also owned by Bonchucks. A genetic track record you can count on. Wheatland 786T is our exclusive outstanding herdsire. Pictured below is an 8 year old 786T son who we have bought back from Glen Abbey Farm to use in our program.



Maple Lake 4096 - Wheatland Bull 786T Son



Maple Lake 9274G - Full Brother



Maple Lake 2266 - Full Sister



27

MAPLE LAKE 786-1097

January 6, 2021 • ML 1097J • Polled • BPG1346742 • Purebred

WHEATLAND BULL 131L
 → **WHEATLAND BULL 786T**
 WHEATLAND LADY 351N

WLB BULL 360S 401X
 → **MJ BLACK LANA 97B**
 MJ BLACK BEAR 21W

NICHOLS BLK DESTINY D12
 WHEATLAND LADY 908J
 HART JACKPOT J310
 WHEATLAND MISS 917J
 WLB BULL 462P 360S
 WLB 366R OLIVE 378U
 ULTRA MR TEDDYBEAR 81S
 MJ BLACK LANA 29M

Dam WT: 1530 lbs.
 BW: 103 lbs.
 May WT: 445 lbs.
 WW: 890 lbs.
 % Weaned: 58%
 Pasture WDA: 3.4 lbs.

CE	BW	WW	YW	MILK	MCE	MWWT
8.2	4.0	76.4	115.0	24.2	5.6	62.4



Maple Lake 0097 - Full Brother sold to Sean Tolton



28

MAPLE LAKE HIGH VOLTAGE 0703

August 31, 2020 • ML 0703H • 1/2

WHEATLAND PREDATOR 922W
 → **HIGH WHEATLAND HIGHVOLTAGE122Y**
 WHEATLAND LADY 736 T

YOUNG DALE BELIEVE 46B
 → **MAPLE LAKE BELIEVE 7203**
 MAPLE LAKE 2103Z

WHEATLAND BULL 680S
 WHEATLAND LADY 752 T
 TNT TOP GUN R244
 WHEATLAND LADY 902J
 YOUNG DALE XCALIBER 32X
 YOUNG DALE GRACE 126Z
 S A V PIONEER 7301
 MAPLE LAKE RICHELLE 5099R

Dam WT: 1480 lbs.
 BW: 92 lbs.
 May WT: 880 lbs.
 % Weaned: 59%
 Pasture WDA: 3.6 lbs.

BW	WW	YW	MILK

This is the only Wheatland High Voltage son in the sale. His Grand dam is our foundation Angus donor 5099. Generations of proven genetics. These half bloods are proving themselves year after year.



29

MAPLE LAKE HEADLINE 1051

January 30, 2021 • ML 1051J • Polled • 3/4

WHEATLAND BULL 680S
 → **WHEATLAND HEADLINE 872U**
 WHEATLAND LADY 609 S

WHEATLAND BULL 786T
 → **MAPLE LAKE MS BOMBER 0051**
 ANGUS/SIMMENTAL

WHEATLAND BULL 131L
 WHEATLAND LADY 351N
 WHEATLAND BULL 468P
 WHEATLAND LADY 435P
 WHEATLAND BULL 131L
 WHEATLAND LADY 351N

Dam WT: 1465 lbs.
 BW: 105 lbs.
 May WT: 420 lbs.
 WW: 990 lbs.
 % Weaned: 68%
 Pasture WDA: 4.2 lbs.

CE	BW	WW	YW	MILK	MCE	MWWT

This boy has a notable history. Wheatland 872U sire is a Wheatland 680S son. Wheatland 680S is a full brother to our Exclusive Wheatland 786T.



Maple Lake Ms Bomber 0051 - Dam & Full Brother

IPU LIEUTENANT 24E SONS



30

MAPLE LAKE LIEUTENANT 1666

January 11, 2021 • ML 1666J • Polled • PG1352069 • ET Purebred

IPU RED DEPUTY 25C
→ IPU LIEUTENANT 24E
IPU MS. HORIZON 21A

LCHMN BODYBUILDER 7303F
→ MAPLE LAKE 6266
MAPLE LAKE WILMA 2266

KUNTZ SHERIFF 8A
IPU 56U MS. RED LINER 81A
MAF R HORIZON 7Y
IPU MS. RED ESSENCE 72W
3C WALLY C240 BLK
LSF MOMENTO D8
WHEATLAND BULL 786T
ACS MS WILMA 265W

Dam WT: 1420 lbs.
BW: 94 lbs.
May WT: 400 lbs.
VWV: 905 lbs.
% Weaned: 64%
Pasture WDA: 3.6 lbs.

CE	BW	VVW	YW	MILK	MCE	MVWWT
6.9	4.5	80.3	118.3	22.3	4.1	62.5

This bulls great grand dam is Wilma 265W, our foundation red donor dam.

31

MAPLE LAKE LIEUTENANT 210

January 20, 2021 • ML 210J • Polled • PG1352869 • Purebred

IPU RED DEPUTY 25C
→ IPU LIEUTENANT 24E
IPU MS. HORIZON 21A

JPC MR LINER 75B
→ BLCC MISS LINER 210F
BLCC MISS RED ROCK 357C

KUNTZ SHERIFF 8A
IPU 56U MS. RED LINER 81A
MAF R HORIZON 7Y
IPU MS. RED ESSENCE 72W
SPRINGCREEK LINER 56U
DRAKE TULA 1R
KWA RED ROCK 5T
BLCC MISS RED LABEL 123S

Dam WT: 1360 lbs.
BW: 79 lbs.
May WT: 380 lbs.
VWV: 865 lbs.
% Weaned: 64%
Pasture WDA: 3.5 lbs.

CE	BW	VVW	YW	MILK	MCE	MVWWT
10.0	2.2	75.5	113.2	24.6	5.9	62.4

Maternal brother, ML 0210H sold to Bois D' Travers Farms.



31

REMINGTON LOCK N LOAD 54U SONS



32

MAPLE LAKE LOCKNLOAD 0890

December 22, 2020 • ML 0890H • Polled • BPG1352067 • Purebred

REMINGTON ON TARGET 2S
 → REMINGTON LOCK N LOAD 54U
 BAR 15 MISS KNIGHT78E-51G

WHEATLAND BULL 786T
 → MAPLE LAKE 786 8390
 BIG HILLS MS EVEREST 390W

REMINGTON RED LABEL HR
 DRAKE SOFT TOUCH 15M
 SV CHARLIES APPLAUSE
 BAR 15 MISS KNIGHT83Y-78E
 WHEATLAND BULL 131L
 WHEATLAND LADY 351N
 DOUBLE BAR D EVEREST 76T
 BIG HILLS LADY STOUT 25S

Dam WT: 1320 lbs.
 BW: 83 lbs.
 May WT: 438 lbs.
 WW: 935 lbs.
 % Weaned: 71%
 Pasture WDA: 3.5 lbs.

CE	BW	WW	YW	MILK	MCE	MWWT
11.8	1.0	68.7	110.8	20.2	7.0	54.6

33

MAPLE LAKE LOCKNLOAD 0495

December 29, 2020 • ML 0495H • Polled • Pending • ET Purebred

REMINGTON ON TARGET 2S
 → REMINGTON LOCK N LOAD 54U
 BAR 15 MISS KNIGHT78E-51G

WHEATLAND SWAGGER 343A \ HP-HOP CC-HOB
 → MAPLE LAKE 5226
 IPU MS. BODYBUILDER 226Z

REMINGTON RED LABEL HR
 DRAKE SOFT TOUCH 15M
 SV CHARLIES APPLAUSE
 BAR 15 MISS KNIGHT83Y-78E
 WHEATLAND PREDATOR 922W
 WHEATLAND LADY 721 T
 MRD MR BODYBUILDER 66S
 IPU MS BEEF MAKER 111U

Dam WT: 1320 lbs.
 BW: 97 lbs.
 May WT: 525 lbs.
 WW: 1040 lbs.
 % Weaned: 79%
 Pasture WDA: 4 lbs.

CE	BW	WW	YW	MILK	MCE	MWWT
8	2.1	67.3	106.5	20.5	3.4	54.2

Maple Lake Swagger 5226 is now a donor cow at LoneStar Simmentals.
 This embryo calf's registration is pending.



WHEATLAND MAN O' WAR 907G SONS



Wheatland Man O' War 907G - Sire



34

34

MAPLE LAKE WARRIOR 2701-1017

January 15, 2021 • ML 1017J • Polled • BPTRS1366952 • 3/4

CLLT ALLIANCE 91C

→ WHEATLAND MAN O' WAR 907G
WHEATLAND LADY 519C

WHEATLAND BULL 786T

→ MAPLE LAKE 2701
SIMMENTAL/ANGUS

WS PILGRIM H182U
BROOKS SHINIA 1A
YARDLEY LAD A440
WHEATLAND LADY 321A
WHEATLAND BULL 131L
WHEATLAND LADY 351N

Dam WT: 1620 lbs.
BW: 97 lbs.
May WT: 445 lbs.
WW: 895 lbs.
% Weaned: 55%
Pasture WDA: 3.6 lbs.

CE	BW	WW	YW	MILK	MCE	MWWT
9.3	1.8	77.5	111.3	22.9	2.9	61.7

35

MAPLE LAKE WARRIOR 1010

January 26, 2021 • ML 1010J • Polled • BPTRS1366966 • 3/4

CLLT ALLIANCE 91C

→ WHEATLAND MAN O' WAR 907G
WHEATLAND LADY 519C

WHEATLAND BULL 786T

→ MAPLE LAKE 2701
SIMMENTAL/ANGUS

WS PILGRIM H182U
BROOKS SHINIA 1A
YARDLEY LAD A440
WHEATLAND LADY 321A
WHEATLAND BULL 131L
WHEATLAND LADY 351N

Dam WT: 1620 lbs.
BW: 102 lbs.
May WT: 450 lbs.
WW: 985 lbs.
% Weaned: 61%
Pasture WDA: 4 lbs.

CE	BW	WW	YW	MILK	MCE	MWWT
9.3	1.8	77.5	111.3	22.9	2.9	61.7

ML 2701Z has 25 progeny and 50+ frozen embryos mated with leading sires: Sunny Valley Canon Crossroad Connected, IPU Bentley.



Maple Lake 2701Z - Dam



Maple Lake 2701Z - Dam



35

WHEATLAND MAN O' WAR 907G SONS



Maple Lake 9701G - Maternal Brother
Sold to Gary McCannell



Maple Lake 8701F - Maternal Brother
Sold to 7 L Ranch



Maple Lake 0701H - Maternal Brother
Sold to Barry Brigden

36

MAPLE LAKE WARRIOR 1312

January 16, 2021 • ML 1312J • Polled • BPTRS1366948 • 3/4

CLLT ALLIANCE 91C
→ WHEATLAND MAN O' WAR 907G
WHEATLAND LADY 519C

WHEATLAND BULL 786T
→ MAPLE LAKE 2701
SIMMENTAL/ANGUS

WS PILGRIM H182U
BROOKS SHINIA 1A
YARDLEY LAD A440
WHEATLAND LADY 321A
WHEATLAND BULL 131L
WHEATLAND LADY 351N

Dam WT: 1620 lbs.
BW: 96 lbs.
May WT: 515 lbs.
WW: 1030 lbs.
% Weaned: 64%
Pasture WDA: 4 lbs.

CE	BW	WW	YW	MILK	MCE	MWWT
9.3	1.8	77.5	111.3	22.9	2.9	61.7

37

MAPLE LAKE MAN O WAR 1634

January 9, 2021 • ML 1634J • Polled • BPTRS1366955 • 3/4

CLLT ALLIANCE 91C
→ WHEATLAND MAN O' WAR 907G
WHEATLAND LADY 519C

WHEATLAND BULL 786T
→ MAPLE LAKE 2701
SIMMENTAL/ANGUS

WS PILGRIM H182U
BROOKS SHINIA 1A
YARDLEY LAD A440
WHEATLAND LADY 321A
WHEATLAND BULL 131L
WHEATLAND LADY 351N

Dam WT: 1620 lbs.
BW: 94 lbs.
May WT: 435 lbs.
WW: 985 lbs.
% Weaned: 61%
Pasture WDA: 3.8 lbs.

CE	BW	WW	YW	MILK	MCE	MWWT
9.6	1.7	76.9	111.9	23.5	3.1	62.0



MAPLE LAKE PLATINUM 6037 SONS



38

MAPLE LAKE PLATINUM 0644

September 7, 2020 • ML 0644H • Polled • BPRS1338364 • 7/8

→ REMINGTON LOCK N LOAD 54U
MAPLE LAKE PLATINUM 6037
 MAPLE LAKE HOTTIE 1907

→ WHEATLAND HIGHVOLTAGE122Y
MAPLE LAKE 6344
 MAPLE LAKE RED RIDER 2345

REMINGTON ON TARGET 2S
 BAR 15 MISS KNIGHT78E-51G
 LFE HOT TOPIC 312W
 MAPLE LAKE MS BOMBER 9907
 WHEATLAND PREDATOR 922W
 WHEATLAND LADY 736 T
 IPU ROUGHRIDER 2T
 BLCC MISS RED 345T

Dam WT: 1575 lbs.
 BW: 89 lbs.
 WW: 990 lbs.
 % Weaned: 63%
 Pasture WDA:

CE	BW	WW	YW	MILK	MCE	MWWT
9.6	2.2	73.1	111.1	24.6	4.9	61.2

39

MAPLE LAKE PLATINUM 1645

January 6, 2021 • ML 1645J • Polled • BPRS1352070 • 7/8

→ REMINGTON LOCK N LOAD 54U
MAPLE LAKE PLATINUM 6037
 MAPLE LAKE HOTTIE 1907

→ WHEATLAND BULL 786T
MAPLE LAKE 6345
 BLCC MISS RED 345T

REMINGTON ON TARGET 2S
 BAR 15 MISS KNIGHT78E-51G
 LFE HOT TOPIC 312W
 MAPLE LAKE MS BOMBER 9907
 WHEATLAND BULL 131L
 WHEATLAND LADY 351N
 LAZY S BLACK 823P
 BLCC MISS JOELLE 77J

Dam WT: 1575 lbs.
 BW: 79 lbs.
 May WT: 385 lbs.
 WW: 905 lbs.
 % Weaned: 57%
 Pasture WDA: 3.5 lbs.

CE	BW	WW	YW	MILK	MCE	MWWT
11.2	0.9	73.4	113.3	23.7	6.0	60.4

These Maple Lake progeny both go back to the BLCC 345T dam. Sire, Maple Lake Platinum 6037 is a Lock n Load son, that has had many exceptional feedlot steers from Randy Henuset's commercial herd. These Maple Lake Platinum sons will add length and performance to your calves.



Maple Lake Platinum 6037D - Sire

MAPLE LAKE PLATINUM 6037 SONS



Maple Lake Platinum 6037- Sire

40

MAPLE LAKE PLATINUM 1103

January 1, 2021 • ML 1103J • Polled • Unregistered • 5/8

→ REMINGTON LOCK N LOAD 54U
MAPLE LAKE PLATINUM 6037
 MAPLE LAKE HOTTIE 1907

→ WHEATLAND HIGHVOLTAGE122Y
MLSF 4103B
 PRAIRIELANE 6008 PRIDE 0003

REMINGTON ON TARGET 2S
 BAR 15 MISS KNIGHT78E-51G
 LFE HOT TOPIC 312W
 MAPLE LAKE MS BOMBER 9907
 WHEATLAND PREDATOR 922W
 WHEATLAND LADY 736 T
 PRAIRIELANE 033 4075 6008
 PRAIRIELANE 8094 PRIDE 0050

Dam WT: 1590 lbs.
 BW: 94 lbs.
 May WT: 485 lbs.
 WW: 1080 lbs.
 % Weaned: 68%
 Pasture WDA: 4 lbs.

CE BW WW YW MILK MCE MWWT

41

MAPLE LAKE PLATINUM 1642

January 6, 2021 • ML 1642J • Polled • Unregistered • 3/4

→ REMINGTON LOCK N LOAD 54U
MAPLE LAKE PLATINUM 6037
 MAPLE LAKE HOTTIE 1907

→ WHEATLAND HIGHVOLTAGE122Y
ML 4642B
 RED MAPLE LAKE 3032A

REMINGTON ON TARGET 2S
 BAR 15 MISS KNIGHT78E-51G
 LFE HOT TOPIC 312W
 MAPLE LAKE MS BOMBER 9907
 WHEATLAND PREDATOR 922W
 WHEATLAND LADY 736 T
 RED SIX MILE WIN-CHESTER 745V
 RED D-BAR LAMBDA 32U

Dam WT: 1565 lbs.
 BW: 103 lbs.
 May WT: 475 lbs.
 WW: 950 lbs.
 % Weaned: 61%
 Pasture WDA: 3.7 lbs.

CE BW WW YW MILK MCE MWWT

Sire, Maple Lake Platinum 6037 is a Lock n Load son, that has had many exceptional feedlot steers from Randy Henuset's commercial herd. These Maple Lake Platinum sons will add length and performance to your calves.



MAPLE LAKE LIEUTENANT 9266 & DLH RENO 8R SONS



Maple Lake Lieutenant 754J



Maple Lake Lieutenant 9266G - Sire



42

MAPLE LAKE LIEUTENANT 754

December 24, 2020 • ML 754H • Polled • Unregistered • 7/8

IPU LIEUTENANT 24E

→ MAPLE LAKE LIEUTENANT 9266
MAPLE LAKE WILMA 2266

DLH RENO 8R

→ MAPLE LAKE 6754
MAPLE LAKE 3754

IPU RED DEPUTY 25C
IPU MS. HORIZON 21A
WHEATLAND BULL 786T
ACS MS WILMA 265W
ANCHOR "T" METRO 4E
BLCC MISS KRYSTAL 23K
WHEATLAND BULL 786T
SIMMENTAL/ANGUS

Dam WT: 1340 lbs.
BW: 83 lbs.
May WT: 590 lbs.
WW: 1060 lbs.
% Weaned: 79%
Pasture WDA: 4 lbs.

CE BW WW YW MILK MCE MWWT

43

MAPLE LAKE RENO 8

December 12, 2020 • ML 8J • Polled • Unregistered • 3/4

ANCHOR "T" METRO 4E

→ DLH RENO 8R
BLCC MISS KRYSTAL 23K

METRO

GISELA
PRL HOUSTON 005H
GORMLEA HELGA 48H

Dam WT: 1610 lbs.
BW: 100 lbs.
May WT: 630 lbs.
WW: 1205 lbs.
% Weaned: 75%
Pasture WDA: 4.5 lbs.

→ 8B (COMMERCIAL SIMMENTAL)

CE BW WW YW MILK MCE MWWT

This calf is not registered as his sire ML 9266G was not Parent verified. The background genetics are all performance proven. 786T is again in the dam pedigree with a foundation donor dam. ML 9266G was sold to the exceptional herd of Zdan Farms. A maternal brother ML 754H was sold to Rupert Farms 2021

This Reno sired bull has got great performance and maternal traits. The dam is not registered but has all the characteristics to be part of our purebred program.



Maple Lake Lieutenant 754H
Maternal Brother



MJTS PRIMAL SCREAM 802G SONS



44

MAPLE LAKE SCREAM 322

January 16, 2021 • ML 322J • Polled • PG1352866 • Purebred

BGS/BM CAPTAIN SCREAM 63D \ HP-HOP
 → MJTS PRIMAL SCREAM 802G \ HP-HOP
 LRX CHEYENNE 14U

NUG TRIGGER 263Y
 → RENDEZVOUS MS KENDRA 322E
 RENDEZVOUS 615T

SVS CAPTAIN MORGAN 11Z
 RF SCREAM 215Z
 TNT TOP GUN R244
 LRX ASHES 102P
 IPU 52N ACCELERATOR 222U
 MS BGS KENDRA 1P
 SU PARAMOUNT 55P
 RENDEZVOUS 611M

Dam WT: 1580 lbs.
 BW: 103 lbs.
 May WT: 540 lbs.
 WW: 1085 lbs.
 % Weaned: 67%
 Pasture WDA: 4.4 lbs.

CE	BW	WW	YW	MILK	MCE	MWWT
2.3	7.0	88.4	128.4	26.1	-0.3	70.3

45

MAPLE LAKE SCREAM 1068

January 6, 2021 • ML 1068J • Polled • PG1352094 • Purebred

BGS/BM CAPTAIN SCREAM 63D \ HP-HOP
 → MJTS PRIMAL SCREAM 802G \ HP-HOP
 LRX CHEYENNE 14U

NUG ROYAL RED 324A
 → MAPLE LAKE ROYAL RED 9068
 BLCC MISS RED LABEL 68T

SVS CAPTAIN MORGAN 11Z
 RF SCREAM 215Z
 TNT TOP GUN R244
 LRX ASHES 102P
 LFE BLACK LAKOTA 385W
 TRIPLE C SMARTY PANTS R
 REMINGTON RED LABEL HR
 BLCC MISS 29R

Dam WT: 1255 lbs.
 BW: 94 lbs.
 May WT: 433 lbs.
 WW: 910 lbs.
 % Weaned: 73%
 Pasture WDA: 3.5 lbs.

CE	BW	WW	YW	MILK	MCE	MWWT
0.5	5.6	81.5	120.8	23.1	-2.3	63.9

A good broody Rendezvous dam Tanner bought from T & M Simmentals. The Primal Scream bulls all have extraordinary muscle definition, that pushes the scale down.



MJTS PRIMAL SCREAM 802G SONS



46

MAPLE LAKE SCREAM 88

January 10, 2021 • ML 88j • Polled • Unregistered • Percentage

BGS/BM CAPTAIN SCREAM 63D \ HP-HOP
 → MJTS PRIMAL SCREAM 802G \ HP-HOP
 LRX CHEYENNE 14U

SVS CAPTAIN MORGAN 11Z
 RF SCREAM 215Z
 TNT TOP GUN R244
 LRX ASHES 102P
 WHEATLAND HI VOLTAGE
 ML 1501Y

Dam WT: 1570 lbs.
 BW: 91 lbs.
 May WT: 585 lbs.
 WW: 1010 lbs.
 % Weaned: 64%
 Pasture WDA: 4 lbs.

ML 3501F
 → 88F

CE BW WW YW MILK MCE MWWT

47

MAPLE LAKE SCREAM 237

January 13, 2021 • ML 237j • Polled • Unregistered • Percentage

BGS/BM CAPTAIN SCREAM 63D \ HP-HOP
 → MJTS PRIMAL SCREAM 802G \ HP-HOP
 LRX CHEYENNE 14U

SVS CAPTAIN MORGAN 11Z
 RF SCREAM 215Z
 TNT TOP GUN R244
 LRX ASHES 102P

Dam WT: lbs.
 BW: 91 lbs.
 May WT: lbs.
 WW: 1080 lbs.
 % Weaned: %
 Pasture WDA: lbs.

→ 237E (UNREGISTERED SIMMENTAL)

CE BW WW YW MILK MCE MWWT

This sire, Primal Scream is an embryo calf we were very pleased to acquire at MTJ Bull Sale. He is a son of Captain Scream 63D. A CWA Champion. Each one of the dams of these bulls did her job well. Exceptional weaning performance.



KWA ROOSEVELT 63F SON



48

MAPLE LAKE ROOSEVELT 1344

December 30, 2020 • ML 1344H • Polled • PG1346731 • Purebred

→ KWA ROOSEVELT 63F
KWA MS ROCK 138Z

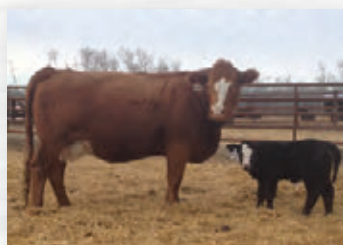
→ MAPLE LAKE RED RIDER 2345
BLCC MISS RED 345T

NF TRUMP S582
CDI MS CROCKET 88T
KWA RED ROCK 5T
TLR SASHA
WHEATLAND RED TEDDY 457P
IPU RED POCAHONTAS 52N
LAZY S BLACK 823P
BLCC MISS JOELLE 77J

Dam WT: 1715 lbs.
BW: 98 lbs.
May WT: 561 lbs.
WW: 1120 lbs.
% Weaned: 65%
Pasture WDA: 4.2 lbs.

CE	BW	WW	YW	MILK	MCE	MWWT
4.8	5.2	84.9	132.3	28.4	2.0	70.9

Strong, proven maternal genetics here at Maple Lake mated to the Ashworth Roosevelt bull has proven exceptional performance, in weaning 1120 lbs on Oct 20. IPU Roughrider was one of our foundation herd sires and BLCC 345T, an accomplished female.



Maple Lake 5345



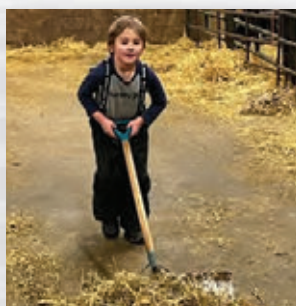
Maple Lake 1645



Maple Lake 0644



ML 6646D - Maternal Sister



MAPLE LAKE PUBLICITY & NUG ROYAL RED 324A SONS

49

MAPLE LAKE PUBLICITY 1101

January 10, 2021 • ML 1101J • Polled • Unregistered • 1/2

WHEATLAND BULL 786T
 → **MAPLE LAKE PUBLICITY 443B**
 ACS MS WILLAMENA 9761W

YOUNG DALE BELIEVE 46B
 → **MSLF 9101G**
 SPRINGCREEK MISTRESS 1Z

WHEATLAND BULL 131L
 WHEATLAND LADY 351N
 REMINGTON ON TARGET 2S
 HAAS RANCH G217
 YOUNG DALE XCALIBER 32X
 YOUNG DALE GRACE 126Z
 S A V FINAL ANSWER 0035
 SPRINGCREEK MISTRESS 70X

Dam WT: 1350 lbs.
 BW: 85 lbs.
 May WT: 446 lbs.
 WW: 960 lbs.
 % Weaned: 71%
 Pasture WDA: 4 lbs.

CE	BW	WW	YW	MILK	MCE	MWWT
----	----	----	----	------	-----	------

Hybrid performance maximized. MSLF 9101G a 3/4 angus female mated to the most phenominal bull calf, Publicity weaned 1206 lbs. Oct 20, 2014



Maple Lake Publicity 443B - Sire

50

MAPLE LAKE ROYAL RED 1711

February 3, 2021 • ML 1711J • Polled • PG1352074 • Purebred

LFE BLACK LAKOTA 385W
 → **NUG ROYAL RED 324A**
 TRIPLC C SMARTY PANTS R

WHEATLAND BULL 786T
 → **MAPLE LAKE MS BOMBER 6711**
 ACS MS WILLAMENA 9761W

R PLUS BLACKEDGE
 KJLI RAZZLE DAZZLE 628R
 TRIPLEC EL PODEROSO REY
 GFI GRAMMS DELIGHT L17
 WHEATLAND BULL 131L
 WHEATLAND LADY 351N
 REMINGTON ON TARGET 2S
 HAAS RANCH G217

Dam WT: 1515 lbs.
 BW: 96 lbs.
 May WT: 445 lbs.
 WW: 955 lbs.
 % Weaned: 63%
 Pasture WDA: 4 lbs.

CE	BW	WW	YW	MILK	MCE	MWWT
6.7	4.1	76.1	114.5	19.9	2.3	58.0

Dam is full sister to the phenomenal Maple Lake Publicity.



51

MAPLE LAKE ROYAL RED 0145

September 29, 2020 • ML 0145H • Polled • PG1338280 • Purebred

LFE BLACK LAKOTA 385W
 → **NUG ROYAL RED 324A**
 TRIPLC C SMARTY PANTS R

IPU ROUGHRIDER 2T
 → **MAPLE LAKE MS RIDER 1345Y**
 BLCC MISS RED 345T

R PLUS BLACKEDGE
 KJLI RAZZLE DAZZLE 628R
 TRIPLEC EL PODEROSO REY
 GFI GRAMMS DELIGHT L17
 WHEATLAND RED TEDDY 457P
 IPU RED POCAHONTAS 52N
 LAZY S BLACK 823P
 BLCC MISS JOELLE 77J

Dam WT: 1705 lbs.
 BW: 89 lbs.
 May WT: 805 lbs.
 WW: 980 lbs.
 % Weaned: 57%
 Pasture WDA: 4 lbs.

CE	BW	WW	YW	MILK	MCE	MWWT
5.7	3.6	76.8	112.6	23.8	1.6	62.2

Another progeny of the distinguished BLCC 345T.



NUG ROYAL RED 324A SONS



NUG Royal Red 324A - Sire

52

MAPLE LAKE ROYAL RED 1267

January 26, 2021 • ML 1267J • Polled • PG1346752 • Purebred

LFE BLACK LAKOTA 385W
 → **NUG ROYAL RED 324A**
 TRIPILE C SMARTY PANTS R

KUNTZ SUPER DUTY 4Y
 → **MAPLE LAKE WILMA 4266**
 ACS MS WILMA 265W

R PLUS BLACKEDGE
 KJLI RAZZLE DAZZLE 628R
 TRIPLEC EL PODEROSO REY
 GFI GRAMMS DELIGHT L17
 NCB RED SUSPECT 30S
 MISS R PLUS 7037T
 TNT TOP GUN R244
 HAAS RANCH G217

Dam WT: 1770 lbs.
 BW: 96 lbs.
 May WT: 455 lbs.
 WW: 1015 lbs.
 % Weaned: 57%
 Pasture WDA: 4.2 lbs.

CE	BW	WW	YW	MILK	MCE	MWWT
4.8	4.8	83.0	127.0	21.0	-1.3	62.5

Maple Lake Royal Red 1267H is a grandson of the donor dam Wilma 265W

53

MAPLE LAKE ROYAL RED 0965

September 16, 2020 • ML 0965H • Polled • PG1338199 • Purebred

LFE BLACK LAKOTA 385W
 → **NUG ROYAL RED 324A**
 TRIPILE C SMARTY PANTS R

TNT TOP GUN R244
 → **ACS MS WILMA 265W**
 HAAS RANCH G217

R PLUS BLACKEDGE
 KJLI RAZZLE DAZZLE 628R
 TRIPLEC EL PODEROSO REY
 GFI GRAMMS DELIGHT L17
 TNT GUNNER N208
 TNT MISS SADIE M68
 NLC 64Y TOMCAT
 HAAS RANCH D89

Dam WT: 1610 lbs.
 BW: 94 lbs.
 WW: 805 lbs.
 % Weaned: 50%
 Pasture WDA: 3.3 lbs.

CE	BW	WW	YW	MILK	MCE	MWWT
7.4	3.8	81.2	123.3	20.7	3.1	61.3

Maple Lake Royal Red 0965H is a son of this same outstanding donor dam.



NUG ROYAL RED 324A SONS



NUG Royal Red 324A - Sire



Maple Lake 6057D - Maternal Sister



54

54

MAPLE LAKE ROYAL BLACK 0557

September 10, 2020 • ML 0557H • Polled • BPG1333315 • Purebred

LFE BLACK LAKOTA 385W
→ **NUG ROYAL RED 324A**
TRIPLC C SMARTY PANTS R

LFE BS LEWIS 322U
→ **IPU MS. STEFFI 57Z**
MISS R PLUS8129U

R PLUS BLACKEDGE
KJLI RAZZLE DAZZLE 628R
TRIPLEC EL PODEROSO REY
GFI GRAMMS DELIGHT L17
R PLUS BLACKEDGE
LFE BS MS ARNOLD 135S
LFE MR LEWIS 347P
KWD MISS SONJA 105K

Dam WT: 1620 lbs.
BW: 92 lbs.
May WT: 690 lbs.
WW: 908 lbs.
% Weaned: 56%
Pasture WDA: 4 lbs.

CE	BW	WW	YW	MILK	MCE	MWWT
5.4	3.7	64.0	91.8	15.4	0.2	47.4

This walking sire has been a great addition to our program.

55

MAPLE LAKE ROYAL RED 0685

September 23, 2020 • ML 0685H • Polled • PG1338276 • Purebred

LFE BLACK LAKOTA 385W
→ **NUG ROYAL RED 324A**
TRIPLC C SMARTY PANTS R

WHEATLAND BULL 786T
→ **MAPLE LAKE 6085**
SUNNY VALLEY CLASSY 85Z

R PLUS BLACKEDGE
KJLI RAZZLE DAZZLE 628R
TRIPLEC EL PODEROSO REY
GFI GRAMMS DELIGHT L17
WHEATLAND BULL 131L
WHEATLAND LADY 351N
LFE RS LEWIS 340W
BLCC MISS 83R

Dam WT: 1310 lbs.
BW: 88 lbs.
May WT: 650 lbs.
WW: 777 lbs.
% Weaned: 59%
Pasture WDA: 3 lbs.

CE	BW	WW	YW	MILK	MCE	MWWT
7.7	2.9	75.4	110.4	20.5	2.1	58.2

This is a good bloodline moving forward as the full sister has joined the donor status ML 9085G.



Maple Lake 9085G - Full Sister



55

NUG ROYAL RED 324A SON



56

MAPLE LAKE ROYAL RED 0112

September 4, 2020 • ML 0112H • Polled • PRS1333310 • 3/4

LFE BLACK LAKOTA 385W
 → NUG ROYAL RED 324A
 TRIPILE C SMARTY PANTS R

WHEATLAND HEADLINE 872U
 → MAPLE LAKE HEADLINE 1212
 ANGUS/ANGUS

R PLUS BLACKEDGE
 KJLI RAZZLE DAZZLE 628R
 TRIPLEC EL PODEROSO REY
 GFI GRAMMS DELIGHT L17
 WHEATLAND BULL 680S
 WHEATLAND LADY 609 S

Dam WT: 1405
 BW: 80 lbs.
 May WT:
 WW: 940 lbs.
 % Weaned: 67%
 Pasture WDA: 4 lbs.

This fella's sire NUG Royal Red has the largest number of progeny in the simmental registry. A highly reputed and successful sire. A maternal sister ML 5512C is in the Quality program at Silver Lake Farms.

CE	BW	WW	YW	MILK	MCE	MWWT
6.2	3.6	71.2	109.1	21.4	1.5	57.0



Maple Lake 5512C - Maternal Sister



NUG Royal Red 324A - Sire

WHEATLAND SWAGGER 343A SONS



Wheatland Swagger 343A



Maple Lake Swagger 6666D



57

MAPLE LAKE SWAGGER 0481

September 3, 2020 • ML 0481H • Polled • BPG1338164 • Purebred

- WHEATLAND PREDATOR 922W
- WHEATLAND SWAGGER 343A \ HP-HOP CC-HOB
- WHEATLAND LADY 721 T
- WHEATLAND BULL 680S
- WHEATLAND LADY 752 T
- WHEATLAND'S INFERNO 325N
- WHEATLAND LADY 444P
- GIDSCO APPOLLO 3F
- KUZ MISS IMPACT 120P
- SIM-ROC C&B WESTERN
- MCC RHODA 100K
- KUZ MR APPOLLO 11X
- JNR AMRITA
- JNR'S RAINA

Dam WT:	1420 lbs.
BW:	90 lbs.
WW:	850 lbs.
YW:	1085 lbs.
% Weaned:	76%
Pasture WDA:	4.6 lbs.

CE	BW	WW	YW	MILK	MCE	MWWT
4.8	5.2	74.1	105.8	28.0	3.3	65.1

58

MAPLE LAKE SWAGGER 1398

January 28, 2021 • ML 1398J • Polled • BPRS1352058 • 7/8

- WHEATLAND PREDATOR 922W
- WHEATLAND SWAGGER 343A \ HP-HOP CC-HOB
- WHEATLAND LADY 721 T
- WHEATLAND BULL 680S
- WHEATLAND LADY 752 T
- WHEATLAND'S INFERNO 325N
- WHEATLAND LADY 444P
- HARVIE JDF WALLBANGER111X
- HARVIE MS TRUFFLE 35X
- WHEATLAND HEADLINE 872U
- ANGUS/ANGUS
- HARVIE MOONSHINE 32Z
- MAPLE LAKE 5399
- MAPLE LAKE 3999

Dam WT:	1710 lbs.
BW:	83 lbs.
May WT:	410 lbs.
WW:	900 lbs.
% Weaned:	67%
Pasture WDA:	3.4 lbs.

CE	BW	WW	YW	MILK	MCE	MWWT
4.8	4.8	83.6	128.9	27.2	-0.4	69.0

Wheatland Swagger is the most soggy swaggering bull we have seen. He has many progeny pleasing their new owners. Daughters are herd builders desired by many.



Maple Lake 7761E - Swagger Female



Maple Lake 1398 - Jelly Bean (4-H Calf)



Maple Lake 0399H - Full Brother
Owned by Greenwood Farms



ANGUS - SIX MILE FORT KNOX 27F FULL SIBS



59

MAPLE LAKE FORT KNOX 152Z

December 25, 2020 • MLSF 1522H • Pending • ET Purebred

PLEASANT VALLEY LUTE 1207
 → SIX MILE FORT KNOX 27F
 SIX MILE TEMPTING TIBBIE 280C
 YOUNG DALE BELIEVE 46B
 → MAPLE LAKE BELIEVE 8041
 MAPLE LAKE 2041Z

PLAINVIEW LUTTON E102
 CHERRY KNOLL ELSA 8014
 CONNEALY COMPLETE 8454
 SIX MILE TIBBIE 901W
 YOUNG DALE XCALIBER 32X
 YOUNG DALE GRACE 126Z
 S A V PIONEER 7301
 MAPLE LAKE RICHELLE 5099R

Dam WT: 1490 lbs.
 BW: 97 lbs.
 May WT: 520 lbs.
 WW: 945 lbs.
 % Weaned: recp
 Pasture WDA: 3.5 lbs.

BW WW YW MILK

60

MAPLE LAKE FORT KNOX 0968

December 25, 2020 • MLSF 0968H • Pending • ET Purebred

PLEASANT VALLEY LUTE 1207
 → SIX MILE FORT KNOX 27F
 SIX MILE TEMPTING TIBBIE 280C
 YOUNG DALE BELIEVE 46B
 → MAPLE LAKE BELIEVE 8041
 MAPLE LAKE 2041Z

PLAINVIEW LUTTON E102
 CHERRY KNOLL ELSA 8014
 CONNEALY COMPLETE 8454
 SIX MILE TIBBIE 901W
 YOUNG DALE XCALIBER 32X
 YOUNG DALE GRACE 126Z
 S A V PIONEER 7301
 MAPLE LAKE RICHELLE 5099R

Dam WT: 1490 lbs.
 BW: 89 lbs.
 May WT: 488 lbs.
 WW: 960 lbs.
 % Weaned: recp
 Pasture WDA: 3.6 lbs.

BW WW YW MILK

These two full brothers are purebreds pending registration. This new herd sire Six Mile Fort Knox is proving to be the predominant Black Angus here and at Young Dale Angus.

This donor dam has performance and depth to admire. Genetics go back 4 generations of top end donor dams. MLSF 2041Z, SAV Pioneer, HDM 5099,83N Kuggerand, PraiseLane IU 1098N.



Six Mile Fort Knox 27F - Sire



MLSF 6041D - Full Sister



MLSF 8041F - Donor Dam

SIX MILE FORT KNOX 37F & MICH WHEATLAND HICALIBER 7197E SONS



Red D Bar Lambda 32U



61

MAPLE LAKE FORT KNOX 1861

February 7, 2021 • MLSF 1861J • 2218322 • Purebred

- PLEASANT VALLEY LUTE 1207
- SIX MILE FORT KNOX 27F
- SIX MILE TEMPTING TIBBIE 280C
- RED DOUBLE B BULLSEYE 1B
- RED MAPLE LAKE BULLS EYE 8661
- RED MAPLE LAKE LAMBDA 6061D

- PLAINVIEW LUTTON E102
- CHERRY KNOLL ELSA 8014
- CONNEALY COMPLETE 8454
- SIX MILE TIBBIE 901W
- RED SOO LINE POWER EYE 161D
- RED BLAIRS PRICILLA 44Z
- RED SIX MILE WIN-CHESTER 745W
- RED D-BAR LAMBDA 32U

Dam WT: 1400 lbs.
 BW: 92 lbs.
 May WT: 400 lbs.
 WW: 905 lbs.
 % Weaned: 65%
 Pasture WDA: 4 lbs.

BW	WW	YW	MILK
4.6	60	99	24

This guy is a red carrier going back to our Red D Bar Lambda 32U donor.

62

MAPLE LAKE HI CALIBRE

January 1, 2021 • MLSF 1697J • 2215609 • Purebred

- EXAR CLASSEN 1422B
- MICH WHEATLAND HICALIBER 7197E
- EXAR HIGHROSE 84026
- S A V RENOWN 3439
- REHORST EVENING TINGE 697D
- JL EVENING TINGE 1250

- DAMERON FIRST CLASS
- EXAR PRINCESS 2006
- EXAR PIT BOSS 409
- CURTIS HIGHROSE 807
- RITO 707 OF IDEAL 3407 7075
- S A V BLACKCAP MAY 4136
- JUSTAMERE 253 BADA BING 406S
- HF EVENING TINGE 57R

Dam WT: 1650 lbs.
 BW: 95 lbs.
 May WT: 540 lbs.
 WW: 1035 lbs.
 % Weaned: 63%
 Pasture WDA: 4 lbs.

BW	WW	YW	MILK
4.4	65	109	26

Excellent weaning performance. Solid full brother, MLSF 0697H working at WKN Land & Cattle.



Mich Wheatland Hicaliber7197E - Sire



MLSF 0967H - Full Brother



MICH WHEATLAND HICALIBER 7197E SONS



63

MAPLE LAKE HI CALIBRE 1007

January 16, 2021 • MLSF 1007J • 2215025 • Purebred

EXAR CLASSEN 1422B
 → MICH WHEATLAND HICALIBER 7197E
 EXAR HIGHROSE 84026

S A V THUNDERBIRD 9061
 → SBF BEA 8007
 STRONGBOW BEA 127D

DAMERON FIRST CLASS
 EXAR PRINCESS 2006
 EXAR PIT BOSS 409
 CURTIS HIGHROSE 807
 S A V FINAL ANSWER 0035
 S A V EMBLYNETTE 7411
 JL DAKOTA 4207
 CRANBERRY CRK BEA 225Z

Dam Wt: 1350 lbs.
 BW: 88 lbs.
 May Wt: 455 lbs.
 WW: 925 lbs.
 % Weaned: 68%
 Pasture WDA: 3.7 lbs.

BW	WW	YW	MILK
3.4	60	101	22

64

MAPLE LAKE HI CALIBRE 1605

December 27, 2020 • MLSF 1605H • 2215602 • Purebred

EXAR CLASSEN 1422B
 → MICH WHEATLAND HICALIBER 7197E
 EXAR HIGHROSE 84026

THOMAS COMPLETE 2142
 → LLB QUEEN MOTHER 605B
 SOO LINE QUEEN 8469

DAMERON FIRST CLASS
 EXAR PRINCESS 2006
 EXAR PIT BOSS 409
 CURTIS HIGHROSE 807
 SUMMITCREST COMPLETE 1P55
 THOMAS CAROL 7595
 CAR TANK 226
 LONE STAR QUEEN 25

Dam Wt: 1410 lbs.
 BW: 81 lbs.
 May Wt: 525 lbs.
 WW: 950 lbs.
 % Weaned: 67%
 Pasture WDA: 3.5 lbs.

BW	WW	YW	MILK
1.8	53	91	23

These two bulls are calving ease. Would work well in a heifer pen.



Mich Wheatland Hicaliber 7197E - Sire

MICH WHEATLAND HICALIBER 7197E SONS



Prairielane 6008 Pride 0003



Maple Lake 8802F
Grand Daughter of MLSF 7803E



65

65

MAPLE LAKE HI CALIBRE 1803

January 6, 2021 • MLSF 1803J • Unregistered • Purebred

EXAR CLASSEN 1422B
→ MICH WHEATLAND HICALIBER 7197E
EXAR HIGHROSE 84026

S A V FINAL ANSWER 0035
→ MLSF 7803E
MLSF 5503C

DAMERON FIRST CLASS
EXAR PRINCESS 2006
EXAR PIT BOSS 409
CURTIS HIGHROSE 807
SITZ TRAVELER 8180
S A V EMULOUS 8145
MVF KUGGERAND 83N
PRAIRIELANE 6008 PRIDE 0003

Dam Wt: 1420 lbs.
BW: 79 lbs.
May Wt: 535 lbs.
WW: 930 lbs.
% Weaned: 65%
Pasture WDA: 3.6 lbs.

BW WW YW MILK

66

MAPLE LAKE HI CALIBRE 1966

January 15, 2021 • MLSF 1966J • 2242401 • Purebred

EXAR CLASSEN 1422B
→ MICH WHEATLAND HICALIBER 7197E
EXAR HIGHROSE 84026

YOUNG DALE BELIEVE 46B
→ MAPLE LAKE BELIEVE 9066
JL FOREVER LADY 6066

DAMERON FIRST CLASS
EXAR PRINCESS 2006
EXAR PIT BOSS 409
CURTIS HIGHROSE 807
YOUNG DALE XCALIBER 32X
YOUNG DALE GRACE 126Z
S A V FINAL ANSWER 0035
JL FOREVER LADY 4105

Dam Wt: 1255 lbs.
BW: 94 lbs.
May Wt: 525 lbs.
WW: 1060 lbs.
% Weaned: 84%
Pasture WDA: 4.2 lbs.

PE BW WW YW MILK
3.75 67.5 109.5 19.5

ML 7803T is a purebred that is not registered way back in the beginning. She has been an impressive momma here at Maple Lake. Raising many half bloods. She has raised 13 calves. A Final Answer dam that has solid, quality structure and longevity. Her grand dam Prairie Lane Pride 0003K. worked successful for 17 yrs. She was a foundation black angus donor dam in the beginning.

It takes good genetics to wean 1060 lbs. on October 20. The dam MLSF 9066G was the deepest and thickest Black Angus female raised to date. She was the high seller in 2020.



Mich Wheatland Hicaliber 7197E - Sire



Maple Lake Believe 9066G - Dam



66



67

MAPLE LAKE BANKNOTE 1913

January 1, 2021 • MLSF 1913J • 2215616 • Purebred

CONNEALY EARNAN 076E
→ **BROOKING BANK NOTE 4040**
E A ROSE 918

YOUNG DALE BELIEVE 46B
→ **MAPLE LAKE BELIEVE 9513**
MAPLE LAKE 2041Z

CONNEALY CONSENSUS
BRAZILA OF CONANGA 3991 839A
S A V FINAL ANSWER 0035
E A ROSE 738
YOUNG DALE XCALIBER 32X
YOUNG DALE GRACE 126Z
S A V PIONEER 7301
MAPLE LAKE RICHELLE 5099R

Dam WT: 1230 lbs.
BW: 75 lbs.
May WT: 475 lbs.
WW: 975 lbs.
% Weaned: 79%
Pasture WDA: 4 lbs.

BW	WW	YW	MILK
2.1	66	108	14

Brooking Bank Note 4040 has exceptional performance mated with the Young Dale Believe dams. Great grand dam is the foundation 5099R cow. Calving ease highly recommended for heifers.

68

MAPLE LAKE BANKNOTE 1434

January 5, 2021 • MLSF 1434J • 2215615 • Purebred

CONNEALY EARNAN 076E
→ **BROOKING BANK NOTE 4040**
E A ROSE 918

YOUNG DALE BELIEVE 46B
→ **MAPLE LAKE BELIEVE 9434**
MAPLE LAKE MOTIVE 4134B

CONNEALY CONSENSUS
BRAZILA OF CONANGA 3991 839A
S A V FINAL ANSWER 0035
E A ROSE 738
YOUNG DALE XCALIBER 32X
YOUNG DALE GRACE 126Z
SOO LINE MOTIVE 9016
PRAIRIELANE 6008 PRIDE 0003

Dam WT: 1275 lbs.
BW: 83 lbs.
May WT: 461 lbs.
WW: 910 lbs.
% Weaned: 71%
Pasture WDA: 3.5 lbs..

BW	WW	YW	MILK
3.3	67	109	13

Great grand dam is the foundation Prairie Lane Pride 0003K. Also highly recommended for heifers.



Prairieline 6008 Pride 0003 (12 years) - Grand Dam

YOUNG DALE BELIEVE 46B SONS



Young Dale Believe 46B - Sire



69

69

MAPLE LAKE BELIEVE 92

December 25, 2020 • MLSF 92J • pending • Purebred

YOUNG DALE XCALIBER 32X
 → YOUNG DALE BELIEVE 46B
 YOUNG DALE GRACE 126Z

COLEMAN VENTURE 403
 → SANE VENT. BARB 111F
 SANE EFF BARB 308W

YOUNG DALE KNOCK OUT 134U
 BROOKMORE TIBBIE 222T
 YOUNG DALE PANARAMA 66T
 YOUNG DALE GRACE 19T
 CONNEALY CAPITALIST 028
 COLEMAN DONNA 714
 CAR EFFICIENT 604
 TARAUS BARB 522L

Dam WT: 1300 lbs.
 BW: 81 lbs.
 May WT: 400 lbs.
 WW: 825 lbs.
 % Weaned: 63%
 Pasture WDA:

BW WW YW MILK

70

MAPLE LAKE BELIEVE 1517

December 25, 2020 • MLSF 1517J • 2240170 • Purebred

YOUNG DALE XCALIBER 32X
 → YOUNG DALE BELIEVE 46B
 YOUNG DALE GRACE 126Z

S A V HERITAGE 6295
 → MAPLE LAKE 0894X
 PRAIRIELANE 8116 ROSEBUD 1098

YOUNG DALE KNOCK OUT 134U
 BROOKMORE TIBBIE 222T
 YOUNG DALE PANARAMA 66T
 YOUNG DALE GRACE 19T
 CAR DUKE 104
 S A V BLACKCAP MAY 4136
 PRAIRIELANE IDEAL 1418-8116
 PRAIRIELANE 2054 ROSEBUD 7013

Dam WT: 1700 lbs.
 BW: 94 lbs.
 May WT: 605 lbs.
 WW: 1130 lbs.
 % Weaned: recip
 Pasture WDA: 4.3 lbs.

BW WW YW MILK

We purchased this moderate extremely thick heifer with Silver Lake Farms from Quebec. Her depth and muscle development caught our attention.

This is the heaviest angus bull weaned in 2021 and in both breeds was in the top 3. Performance and power from dam side MLSF 0894X. Maternal brother ML 1568J sells as lot 5, a sim /angus powerhpuse. Last years Full brother is owned by Bob McLeod MLSF 0732H



MSLF 0732H - Full Brother



70

YOUNG DALE BELIEVE 46B SONS



71

MAPLE LAKE BELIEVE 0911

January 1, 2021 • MLSF 0911J • 2215617 • Purebred

YOUNG DALE XCALIBER 32X
→ YOUNG DALE BELIEVE 46B
YOUNG DALE GRACE 126Z

R R RITO 8799
→ MAPLE LAKE RITO 9711
HF EVENING TINGE 57R

YOUNG DALE KNOCK OUT 134U
BROOKMORE TIBBIE 222T
YOUNG DALE PANARAMA 66T
YOUNG DALE GRACE 19T
RITO N BAR
PRIDES LASS OF C C 521
HF FREE WHEELER 191N
HF EVENING TINGE 68H

Dam WT: 1350 lbs.
BW: 84 lbs.
May WT: 518 lbs.
WW: 925 lbs.
% Weaned: 68%
Pasture WDA: 3.5 lbs.

BW	WW	YW	MILK
-1.0	2.7	49	73



72

MAPLE LAKE BELIEVE 1401

January 7, 2021 • MLSF 1401J • Unregistered • 1/2

YOUNG DALE XCALIBER 32X
→ YOUNG DALE BELIEVE 46B
YOUNG DALE GRACE 126Z

MARC 31D
→ ML 8401F
MAPLE LAKE 4701

YOUNG DALE KNOCK OUT 134U
BROOKMORE TIBBIE 222T
YOUNG DALE PANARAMA 66T
YOUNG DALE GRACE 19T
PHS BACK WOODS 317B
SILVER LAKE BELLA 31B
3C PASQUE 8773
MAPLE LAKE 2701

Dam WT: 1520 lbs.
BW: 94 lbs.
May WT: 571 lbs.
WW: 1053 lbs.
% Weaned: 69%
Pasture WDA: 4.11 lbs.

BW	WW	YW	MILK

This 7/8 Purebred Simmental dam has a shot of Fleckvieh and raised a 1053 lb first calf! Great grand dam, ML 2701Z is a donor dam, she has earned the role. Power and performance is bred in for generations. Our donor cows have to check all the qualifications before being flushed.



73

MAPLE LAKE BELIEVE 0044

December 29, 2020 • MLSF 0044H • Unregistered • 3/4

YOUNG DALE XCALIBER 32X
→ YOUNG DALE BELIEVE 46B
YOUNG DALE GRACE 126Z

WHEATLAND BULL 786T
→ MAPLE LAKE MS BOMBER 1108
HDM 5099R

YOUNG DALE KNOCK OUT 134U
BROOKMORE TIBBIE 222T
YOUNG DALE PANARAMA 66T
YOUNG DALE GRACE 19T
WHEATLAND BULL 131L
WHEATLAND LADY 351N

Dam WT: 1460 lbs.
BW: 94 lbs.
May WT: 455 lbs.
WW: 965 lbs.
% Weaned: 66%
Pasture WDA: 3.6 lbs.

BW	WW	YW	MILK

This 3/4 Angus has a 1/2 blood Simmental donor dam. She has proven performance and is solid deep as they come

Maple Lake Ms Bomber 1108 -Dam

MUSGRAVE 316 STUNNER & S A V FINAL ANSWER 0035 SONS



Musgrave 316 Stunner - Sire



74

MAPLE LAKE STUNNER 1956

January 8, 2021 • MLSF 1956J • 2235111 • Purebred

LD CAPITALIST 316
→ **MUSGRAVE 316 STUNNER**
MCATL BLACKBIRD 831-1378

YOUNG DALE BELIEVE 46B
→ **MAPLE LAKE BELIEVE 9656**
MAPLE LAKE RICHELLE 5009C

CONNEALY CAPITALIST 028
LD DIXIE ERICA 2053
MCATL PURE PRODUCT 903-55
MCATL BLACKBIRD 1378-573
YOUNG DALE XCALIBER 32X
YOUNG DALE GRACE 126Z
S A V FINAL ANSWER 0035
MAPLE LAKE RICHELLE 5099R

Dam WT: 1240 lbs.
BW: 79 lbs.
May WT: 435 lbs.
WW: 855 lbs.
% Weaned: 69%
Pasture WDA: 3.3 lbs.

BW	WW	YW	MILK
1.5	61	103	21

Stunner is recommended heifer bull.

75

MAPLE LAKE FINAL ANSWER 1134

January 1, 2021 • MLSF 1134J • 2215029 • Purebred

SITZ TRAVELER 8180
→ **S A V FINAL ANSWER 0035**
S A V EMULOUS 8145

SOO LINE MOTIVE 9016
→ **MAPLE LAKE MOTIVE 4134B**
PRAIRIELANE 6008 PRIDE 0003

G D A R TRAVELER 71
SITZ EVERELDA ENTENSE 1137
BON VIEW BANDO 598
S A V SKY EMULOUS 2124
HF KODIAK 5R
TLA BEAUTY 5R
PRAIRIELANE 033 4075 6008
PRAIRIELANE 8094 PRIDE 0050

Dam WT: 1760 lbs.
BW: 94 lbs.
May WT: 475 lbs.
WW: 935 lbs.
% Weaned: 53%
Pasture WDA: 3.5 lbs.

BW	WW	YW	MILK
2.1	45	81	21

This Final Answer son is backed by maternal quality and longevity. Soo Line Motive and Grand Dam Prairielane 6008 Pride 0003K



RED MRLA RESPECT 42G SON



76

MAPLE LAKE RESPECT 1832

January 1, 2021 • MLSF 1832J • 2215611 • Purebred

RED U2 RETROSPECT 29E
 → RED MRLA RESPECT 42G
 MRLA MISS 4408B

RED SIX MILE SAKIC 832S
 → RED MAPLE LAKE SAKIC 8032
 RED D-BAR LAMBDA 32U

RED U-2 REVERENCE 198C
 RED U-2 ANEXA 226C
 S A V HARVESTOR 0338
 RED MRLA MISS 803R
 RED SIX MILE AVIATOR 217P
 RED SIX MILE SIERA 257P
 RED LAZY MC SMASH 41N
 RED KORAN LAMBDA 127L 379

Dam WT: 1430 lbs.
 BW: 75 lbs.
 May WT: 480 lbs.
 WW: 995 lbs.
 % Weaned: 70%
 Pasture WDA: 4 lbs.

BW	WW	YW	MILK
8.0	47	78	26



Red MRLA Respect 42G - Sire

This Blood line is instrumental in our program. This donor dam 32U has been very profitable. MRLA Respect brings some leading genetics to this future herd sire. We have confidence in this mating. Red Angus performance maximized.



MSLF 1832 on Dam



MSLF 3032A - Full Sister to Dam

SILVER LAKE FREIGHTLINER 13F SONS



77

MAPLE LAKE FREIGHTLINER 0411

January 26, 2020 • ML 0411H • Polled • PG1306324 • Purebred

→ SILVER LAKE FREIGHTLINER 13F
 SPRINGCREEK JOY 163Y

→ DOUBLE BAR D AMY 411E
 DOUBLE BAR D AMY 584B

RCC/TCF LINE DRIVE M181
 NEVAS L93
 HART ALL IN W382
 SPRINGCREEK LINNE 29R
 CDI AUTHORITY 77X
 KWA MS ROCK 14X
 JUSTABOUT KING LABEL
 DOUBLE BAR D AMY 701Y

Dam WT: 1405 lbs.
 BW: 113 lbs.
 May WT: 504 lbs.
 WW: 1060 lbs.
 % Weaned: 75%
 Pasture WDA: 4.4 lbs.

CE	BW	WW	YW	MILK	MCE	MWWT
2.5	6.9	104.7	159.9	34.9	0.3	87.3

This bigger birthweight bull has tons of performance. He was born unassisted. We have used him with commercial cows with confidence.

78

MAPLE LAKE FREIGHTLINER 0441

January 27, 2020 • ML 0441H • Polled • PG1306296 • Purebred

→ SILVER LAKE FREIGHTLINER 13F
 SPRINGCREEK JOY 163Y

→ MAPLE LAKE MS LOADED 4241
 MAPLE LAKE MS 7210T

RCC/TCF LINE DRIVE M181
 NEVAS L93
 HART ALL IN W382
 SPRINGCREEK LINNE 29R
 REMINGTON ON TARGET 2S
 BAR 15 MISS KNIGHT78E-51G
 LCHMN BODYBUILDER 7303F
 MAPLE LAKE MS QUORUM 5209

Dam WT: 1460 lbs.
 BW: 103 lbs.
 May WT: 499 lbs.
 WW: 1075 lbs.
 % Weaned: 73%
 Pasture WDA: 4.5 lbs.

CE	BW	WW	YW	MILK	MCE	MWWT
6.1	4.1	95.6	147.9	30.8	4.5	78.6

Another high performance bull. He walked pastures last spring at Archie McPhersons'.



Maple Lake Freightliner0441 - Weaning



NUG ROYAL RED 324A MAKE LAKE DENSITY 4041B SONS



79

MAPLE LAKE ROYAL RED 0165

February 5, 2020 • ML 0165H • Polled • BPG1329047 • Purebred

LFE BLACK LAKOTA 385W
 → NUG ROYAL RED 324A
 TRIPLE C SMARTY PANTS R

WHEATLAND HEADLINE 872U
 → MAPLE LAKE RAVEN 1065Y
 DOUBLE BAR D RAVEN 64T

R PLUS BLACKEDGE
 KJLI RAZZLE DAZZLE 628R
 TRIPLE C EL PODEROSO REY
 GFI GRAMMS DELIGHT L17
 WHEATLAND BULL 680S
 WHEATLAND LADY 609 S
 GCF FIRST DREAM P13
 MISS GJR RAVEN 31R

Dam WT: 1400 lbs.
 BW: 92 lbs.
 May WT: 417 lbs.
 WW: 836 lbs.
 % Weaned: 60%
 Pasture WDA: 3.6 lbs.

CE	BW	WW	YW	MILK	MCE	MWWT
7.4	3.1	70.3	104.1	21.8	2.8	57.0

Highly recommended calving ease. This bull walked at Elliot Keil's last summer.

80

MAPLE LAKE 0321

January 27, 2020 • MLSF 0321H • 2134101 • Purebred

S A V 004 DENSITY 4336
 → MAPLE LAKE DENSITY 4041B
 MAPLE LAKE 2041Z

CONNELLY IN FOCUS 4925
 → GALTEN FOCUS VALERIE 321C
 GALTEN TRAVELLER VALERIE 134X

S A V 8180 TRAVELER 004
 S A V MAY 7238
 S A V PIONEER 7301
 MAPLE LAKE RICHELLE 5099R
 MYTTY IN FOCUS
 BLACK CANA OF CONANGA 206
 ROYAL TRAVELER DRCC 7109T
 GALTEN PENTIUM VALERIE 94U

Dam WT: 1492 lbs.
 BW: 108 lbs.
 May WT: 430 lbs.
 WW: 915 lbs.
 % Weaned: 59%
 Pasture WDA: 4 lbs.

BW	WW	YW	MILK
5.3	62	104	22

Also a proven breeder, with calving ease. Walked in Eva Brown's herd last season.



COMMERCIAL HEIFERS

5 OPEN RED BLAZE ANGUSXSIMM HEIFERS

January/February Born

Sire: MLSF 7032E {S A V Networth Son} Dam: MLSF 3032A

Tanner Bertholet: 204-741-0653 Gracie Falconer: 204-576-0163

81



MLSF 7032E - Sire

5 BLACK 5 RED HEIFERS

Sire: Maple Lake 6137D Dam: Maple Lake Roughrider 1137Y

Speers Farms Warren: 204-724-3285

82



ML 6137D - Sire

3 RED 3 BLACK HEIFERS

Sire: ML 4096G {786T son} & ML 7711E {Swagger Son}

Glen Abbey Farms: 204-526-5077

83



ML 4096G- Sire

3 RED 3 BLACK HEIFERS

Sire: ML 4055B {Lock N Load Son}

Dale Struder: 204-748-1251

84



ML 4055B- Sire



**Return Undeliverable
Canadian Addresses To:**

**T Bar C Cattle Co. Ltd.
Box 2330
Warman, SK S0K 4S0**



DIRECTIONS TO THE FARM:

From Hwy #2
4¾ miles south on
Road 145W (Findlay Road),
turn west up the lane.

From Hwy #83
9 miles east on Grande-
Clairière Road, turn north
1¼ miles to lane on west.

From Hwy #21
2 miles west of
Grande-Clairière ¼ mile north,
west up the lane.

Created by

